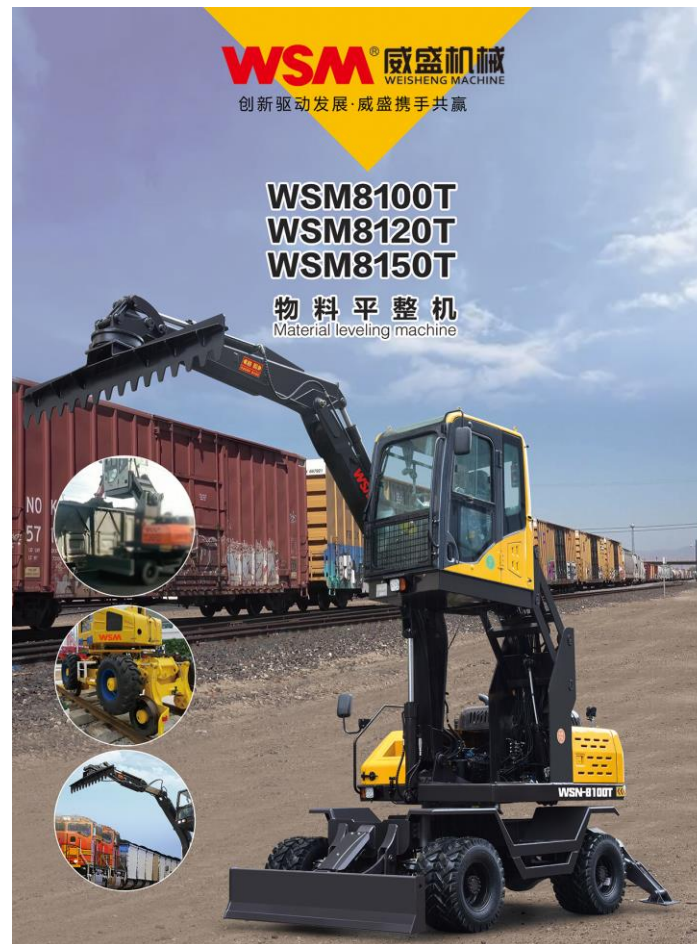


福建威盛机械发展有限公司



Fujian Weisheng Machinery Development Co., Ltd.

材料整平机 Material leveling machine



产品简介 Product Introduction

平整机是利用刮刀平整地面的土方机械，刮刀装在机械前后轮轴之间，能升降、倾斜、回转和外伸。动作灵活准确，操纵方便，平整场地有较高的精度，适用于构筑路基和路面、修筑边坡、开挖边沟，也可搅拌路面混合料、扫除积雪、推送散粒物料以及进行土路和碎石路的养护工作。平地机是土方工程中用于整形和平整作业的主要机械，广泛用于公路、机场等大面积的地面平整作业。威盛机械平整机之所以有广泛的辅助作业能力，是由于它的刮土板能在空间完成6度运动。它们可以单独进行，也可以组合进行。平整机在路基施工中，能为路基提供足够的强度和稳定性。The leveling machine is an earth-moving machine that uses a scraper to level the ground. The scraper is installed between the front and rear axles of the machine and can lift, tilt, rotate and extend. The action is flexible and accurate, the operation is convenient, and the leveling site has high precision. It is suitable for constructing roadbeds and road surfaces, building side slopes, digging side ditches, mixing road mixtures, sweeping snow, pushing loose materials, and carrying out soil road construction. Maintenance of gravel roads. Motor graders are the main machinery used for shaping and leveling operations in earthwork, and are widely used for large-area ground leveling operations such as highways and airports. The reason why the VIA mechanical grader has a wide range of auxiliary operation capabilities is that its scraper can complete a 6-degree movement in the space. They can be carried out individually or in combination. The leveling machine can provide sufficient strength and stability for the roadbed in the construction of the roadbed.

外型尺寸 Dimensions	WSM8100T	WSM8120T	WSM8150T
(总长*总宽*总高) 运输状态 (Length*width*height) Transport Dimension	6100*2500*3100mm	6700*2380*3050mm	7200*2500*3000mm
轴距 Wheel base	2400mm	2600mm	2750mm
轮距 (前/后) Track (Front/rear)	1850mm/1750mm	1930/1830mm	1900mm
加强驱动桥 Reinforced Drive Axle	10T 专用型	12T 专用型	15T 专用型
配重离地间隙 Ground clearance of counterweight	1150mm	1250mm	1260mm
最小离地间隙 Min ground clearance	350mm	440mm	310mm
工作范围 Range of operation			
动臂长度 Boom length	3680mm	4000mm	4200mm
斗臂长度 Arm length	2000mm	2150mm	2000mm
最大挖掘距离 Maximum Digging Reach	6800mm	7200mm	7200mm
最大挖掘深度 Maximum Digging Depth	3500mm	4400mm	4100mm
最大挖掘力 Maximum Digging Force	60kn	60KN	90KN
最大挖掘高度 Maximum Digging Height	5500mm	6500mm	8000mm
最大卸载高度 Maximum Dumping Height	3500mm	4700mm	6000mm
驾驶室可提升高度 Max Lifting Height of Cab	1800mm	1800mm	1800-2500mm
平整器宽度 Width of Leveler	2500mm	2500mm	2200-2500mm
最大推平高度 Maximum leveling height	4450mm	≤5000	≤5300
后端回转半径 Back-end radius of gyration	1800mm	2000mm	2250mm
技术性能参数 Tech performance and specification			
旋转角度 Angle of rotation	360°	360°	360°
整机重量 Machine weight	7600kg	10500kg	12500kg
发动机型号 Engine model	玉柴 YUCHAI (国III)	玉柴 YUCHAI (国III)	康明斯 Cummins (国III)

额定功率 Rated Power	62.5KW	62.5KW/73.5KW	93KW
额定转速 Rated Speed	2200r/min	2200r/min	2200r/min
液压系统工作压力 Hydraulic system working pressure	21Mpa	25Mpa	28Mpa
液压系统流量 Hydranlic system flow	150L/min	180L/min	270L/min
变量柱塞泵 Variable piston pump	72ml/r		2*63ml/r
最大牵引力 Max Hauling force	60KN	50KN	76.5KN
最高行驶速度 Walking speed	25km/h	25km/h	25km/h
爬坡度 Grade Climbing ability	58%/30°	58%/30°	58%/30°
轮胎型号 Tyre model	8.25-16		9.00-20
挖掘斗容 Volume Of Bucket	0.25m ³	0.35m ³	0.4-0.5m ³
回转过载压力 Swing Overload Pressure	20Mpa		
全回转时间 Full circle swinging time	5.5s	5.5s	5.5s
燃油量 Fqt Fuel Quantity	≥4L/h	≥6L/h	≥6L/h
燃油箱容量 Capacity Of The Fuel Tank	110L	150L	200L
液压油箱容量 Hydraulic Tank Capacity	110L	150L	200L
WSM120S 机械变速箱档位 Mechanical Transmission Gear		前 5/倒 1 Forward5/Backward1	
WSM120S-A 全液压变速箱档位 Full Hydraulic Transmission Gear		前 1/倒 1~前 2/倒 2 F1/B1~F2/B	
WSM120S-C 自动档前进/后退速度(手自一体/全液压)The Speed of Automatic Transmission Gear Forward / Backward (Tiptronic/ Full Hydraulic)		前 5/倒 1 Forward5/Backward1/前 1/倒 1 F1/B1	
选配 optional			
驾驶室升降区间 Lifting range of cab	1.8	1.8	1.8

斗杆可伸缩长度 Max Extended Distance of Arm	800mm	800mm	800mm
铁轨行驶专用钢轨装置系统 Special rail device system for rail travel	有 Have	有 Have	有 Have

威盛公司其他产品画册展示综合图 Comprehensive picture of WSM other product albums



WSM 威盛机械
WEISHENG MACHINE

— 创新驱动发展 · 机械携手共赢 —

现代物流搬运 推动装卸效率

MODERN LOGISTICS HANDLING >>



福建省威盛机械发展有限公司

Fujian weisheng machine development Co., Ltd.

ADD: 福建省晋江市经济开发区(安海园)安海路28号

ADD: Andong Economic Development Zone Jijiang city, Fujian province, China.

TEL: 180 6559 6559 Http://www.wsmcn.com E-mail: WSM@wsmcn.com



— 创新驱动发展 · 威盛携手共赢 —

现代物流搬运 MODERN LOGISTICS 推动装卸效率 HANDLING



WSM[®] 威盛机械
WEISHENG MACHINE

☎ 0595-88-111-222 88-111-333



福建省威盛机械发展有限公司

FUJIAN WEISHENG MACHINE DEVELOPMENT CO.,LTD

地址：福建省晋江市经济开发区（安东园）

ADD: Jinjiang Economic Development Zone (Andong Area)

邮编/P.C: 362271

电话/TEL: +86 595-88111222 88111333

售后服务部电话/After-sales service tel: +86 595-82085555

传真/FAX: +86 595-85593111

网址/Website: [Http://www.wsmcn.com](http://www.wsmcn.com)

网络实名/Network Real Name: 威盛机械 Weisheng Machine

邮箱/E-mail: wsm@wsmcn.com